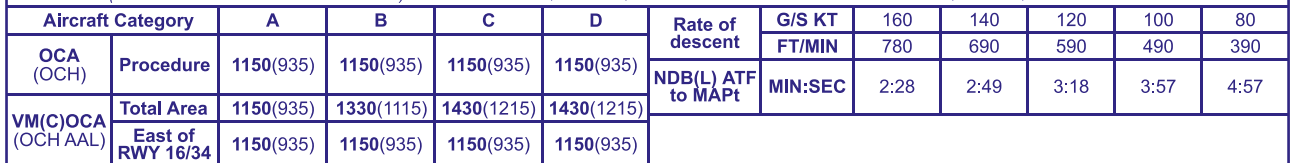


ABERDEEN/DYCE
NDB(L)/DME
RWY 34
(ACFT CAT A,B,C,D)



Arrival via IAF not below MSA or 2500 whichever is higher. Shuttle in hold if necessary to 2500.



ALTERNATIVE PROCEDURE BASE TURN REVERSAL
From NDB(L) ATF fly outbound on QDR 127° (CAT A,B) or QDR 090° (CAT C,D) descending as required to **not below 2500**. At I-ABD DME 10/ADN DME 17.4 turn right onto extended FAT. When established continue as for main procedure. Aircraft unable to receive DME should fly outbound for 1 MIN 06 SEC (CAT A,B); 0 MIN 48 SEC (CAT C,D) prior to base turn right.

NOTE 1 I-ABD DME and ADN DME not co-located. Ensure correct range cross check is used for the DME received.

CHANGE (4/26): MAG INFO REVISED, MAG HEADINGS.

AERO INFO DATE 02 FEB 26

AD 2-EGPD-8-7